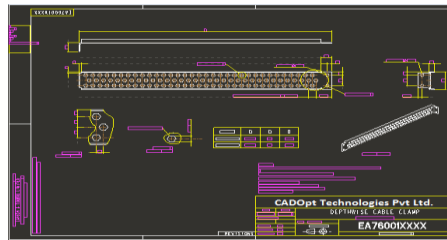




Switchboard Feeder Design Automation Tool

Switchboards feeder design Streamlining the complete Switchboards Product Development Process (PDP). Develop an Automation for Error Free Design, Capturing Domain Knowledge, Centralized Access, Data Security, Reduce Design Cycle Time, Reusing Tools, Enhance User Friendliness. Switchboards feeder design automation collects the basic information of the component and other required parameters in various forms to automatically produce complete frame assembly and drawing for Switchboards.



Project Name	Model	Drawing	ROI	Start Date	Status
EC_78_FT_2024_IP_2024_111_540_CAD_5401127D	<input type="checkbox"/>	<input type="checkbox"/>	<input type="checkbox"/>	11/12/2024	To Start
EC_78_FT_2024_IP_2024_142_749_CAD_5401127D-HDC	<input type="checkbox"/>	<input type="checkbox"/>	<input type="checkbox"/>	11/01/2024	To Start
EC_78_FT_2024_IP_2024_142_749_CAD_5401127D-HDC	<input type="checkbox"/>	<input type="checkbox"/>	<input type="checkbox"/>	11/01/2024	In Progress
EC_78_FT_2024_IP_2024_142_749_CAD_5401127D-HDC	<input type="checkbox"/>	<input type="checkbox"/>	<input type="checkbox"/>	11/01/2024	In Progress

SLNO	Part Name	Description	Quantity	Status
FR1 ACB MTG 6X9 4P				
1	EA76004XXXX	FIXING PLATE	2	reuse
2	EA76003XXXX2	WIDTHWISE CHANNEL	1	reuse
3	EA76005XXXX2	ACB MOUNTING BASE PLATE	1	reuse

Current Scenario (Without Application):

User need to Manually:

- User needs actual practice to create the part, assembly, drawing for feeder detail.
- User need to create a separate document for each variant of feeder.

Negative consequences:

- Human error will occur due to manual entry for connector detail.
- Mismatching of ACB and poles detail is avoided.

Positive Business Outcome:

- **ROI** – quick Return on Investment (ROI) considering the significant time savings and reduced ECN's.
 - **Time to market** – Few clicks solution to get entire Assembly.
- **Enhanced User Productivity** - Eliminate Designer's/ Creo User's non-productive (manual settings) activities by Saving up to 80-90% of frame design time.
- **Standardization** – Standardization of Process as per company standards.
- **Quality output:**
 - **User Friendly Interface** - Self-Guided Screens, Representative Images.
 - **Error Free** – Eliminates errors (like mismatching of pols & ACB position, wrong detail of Span, etc.).
 - **Status monitoring** - To Start, In Progress, Completed.



CADOpt
Technologies

Switchboard Feeder Design Automation Tool
manufacturing companies by using Creo (Pro/ENGINEER)

How it adds value:

- Works with PTC Creo (Pro/ ENGINEER) Basic Licenses.
- Few-click solution that automatically get the all the parts and entire switchboard feeder assembly based on variant.
- Customized all parts and assembly drawing generate automatically, and views update based on switchboard feeder size and types.
- All the dimensions and notes show and hide based on Feeder type.
- Works in conjunction with PTC Windchill/ PDM-Link or Intralinks.

List of satisfied users:

- L&T - (Coimbatore)

For more info contact CADOpt Technologies Private Limited at: info@CADOpt.com or visit our website at www.CADOpt.com